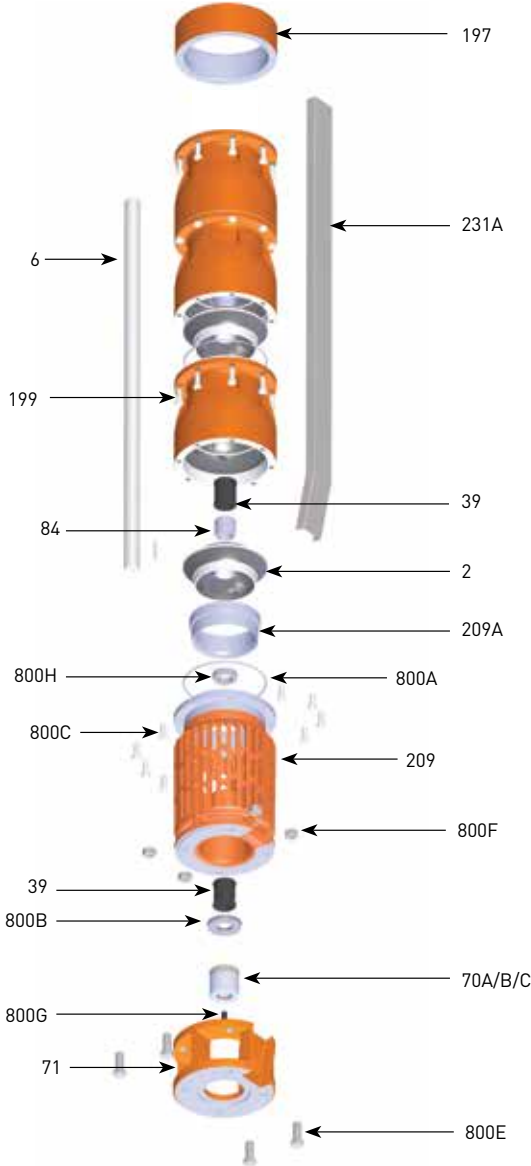


BERKELEY® 10TMH SERIES

2250 GPM, 60HZ, NPT, 8" & 10" Motors

Section	ST-10TMH
Page	1.0
Date	March 21, 2018
Supersedes	New



2250 Series			
Item Number	Part Number	Description	Req. Qty.
2	See table 2	Impeller	1/Stg
6	See table 3	Shaft	1
39	M16146	Bearing, Rubber	1/Stg
70A	M16764	Coupling, 8" motor (Inc key)	1
70B	M16765	Coupling, 10", "A" Register (Inc key)	1
70C	M16766	Coupling, 10", "B" Register (Inc key)	1
71	M16762	8" motor adapter	1
71	M16763	10" motor adapter	1
84	LV2275004 3080F	Collet	1/Stg
199	M16727	Bowl, see table 1 for assembly	1
197	M16720N	Discharge	1
209	M16761	Screen*	1
209A	M16972	Suction Insert	1
231A	See table 3	Cable Guard	1
800A	HYD6E136 9923F	O-Ring	1/stg
800B	M14791	Thrust Washers	3
800C	S23623	CAPSCREW,HEX HD 1/2-13NC X 1-1/2L 303SS	8/Stg
Not Shown	M09653PNR	Nameplate	1
Not Shown	M10199	Rivet	2
800E	11F7A0203 0005F	Screw-Cap 3/4-10X 2-1/4 UNC HEX 18-8 SST	4
800F	11F25A10008 0005F	NUT-HEX 3/4-10 UNC Regular 18-8 SST	4
800G	11FM8C0112 0005F	Cap Screw 1/2-13 X 1-1/4 UNC S Ocket Hea	1
800H	M16730	Sand Slinger 10TMH 316SS	1
Not Shown	S23982	Sand Collar setscrews (2 req per slinger)	4
Not Shown	See table 3	Cable guard clamp	1
Not Shown	M13517	Direction Arrow	1

*Reqs qty 1 of HYD6E136 9923F O-Ring

TABLE 1 - Additional Staging		
Item Number	Part Number	Description
39A	M16146	Rubber Bearing
	M17017	Vesconite Bearing
	M16144	Bronze Bearing
199	B87068	Bowl Assy, rubber
84	LV2275004 3080F	Collet
800A	HYD6E136 9923F	O-Ring

TABLE 2 - Impellers		
Item Number	Part Number	Description
2	M16737	IMPELLER 10VT1150/10TMH2250 MACH SS 8.00 Trim A
	M17007	IMPELLER 10TMH-2250 MACH SS 7.810D Trim B
	M17008	IMPELLER 10TMH-2250 MACH SS 7.39-OD Trim C
	M17009	IMPELLER 10TMH-2250 MACH SS 7.26-OD Trim D

TABLE 3

Motor	Series	HP/kw	Stages	Trim				BM#	Shaft PN	Cable Guard	*Cable Guard Hardware Kit	Assembled Pump Length
				"A"	"B"	"C"	"D"					
8" Motor	10TMH75-2250	75/55.9kW	1				1	B87148	M17028	M17035	B87157	34.08 in / 865 mm
	10TMH100-2250	100/74.6kW	1		1			B87149	M17028	M17035		34.58 in / 878 mm
	10TMH125-2250	125/93.2kW	1	1				B87150	M17028	M17035		34.58 in / 878 mm
	10TMH150-2250	150/111.9kW	2			1	1	B87151	M17029	M17037		44.58 in / 1132 mm
10" Mtr, "A" Register	10TMH175-2250	175/130.5kW	2		1	1		B87152	M17029	M17044	B87158	45.58 in / 1158 mm
	10TMH200-2250	200/149.1kW	2	1	1			B87154	M17029	M17044		45.58 in / 1158 mm
10" Mtr, "B" Register	10TMH175-2250	175/130.5kW	2		1	1		B87153	M17029	M17044		45.58 in / 1158 mm
	10TMH200-2250	200/149.1kW	2	1	1			B87155	M17029	M17044		45.58 in / 1158 mm

